



**Road Running Technical Council
USA Track & Field
Measurement Certificate**



Name of the course Half Crazy Half Marathon Distance 21.0975 km
Location (state) TX (city) Mineral Wells
Type of course: Road Race
Measuring Methods: Bicycle
Measured By Gary Brumley, 3509 Cromart Ave, Fort Worth, TX 76133, gary@txcourseworks.com, --
Race Contact Jana Johnson, jjohnson@sandllc.com - 214.793.2858
Date(s) when course measured: 05/18/2024
Number of measurements of entire course: 2 Course Configuration: Keyhole
Elevation (meters above sea level) Start 269.00 Finish 269.00 Lowest 269.00 Highest 337.00
Straight line distance between start and finish 0m Drop 0.00 m/km Separation 0.00 %
Type of surface: Paved 100 % Dirt 0 % Gravel 0 % Grass 0 % Track 0 %
Effective date of certification: June 21, 2024 Certification code: TX24020LAB

Note to Race Director: Use this Certification Code
in all public announcements relating to your race.

Be It Officially Noted That

Based on examination of data provided by the above named measurer, the course described above and in the map attached is hereby certified as reasonably accurate in measurement according to the standards adopted by the Road Running Technical Council. If any changes are made to the course, this certification becomes void, and the course must then be recertified.

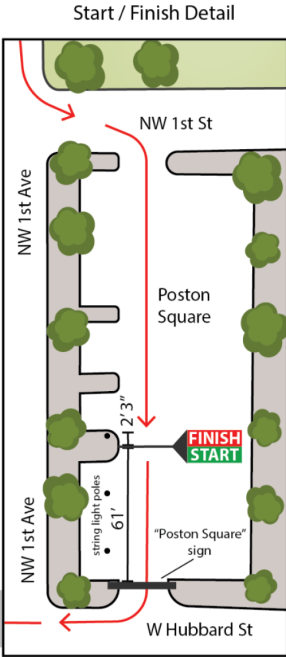
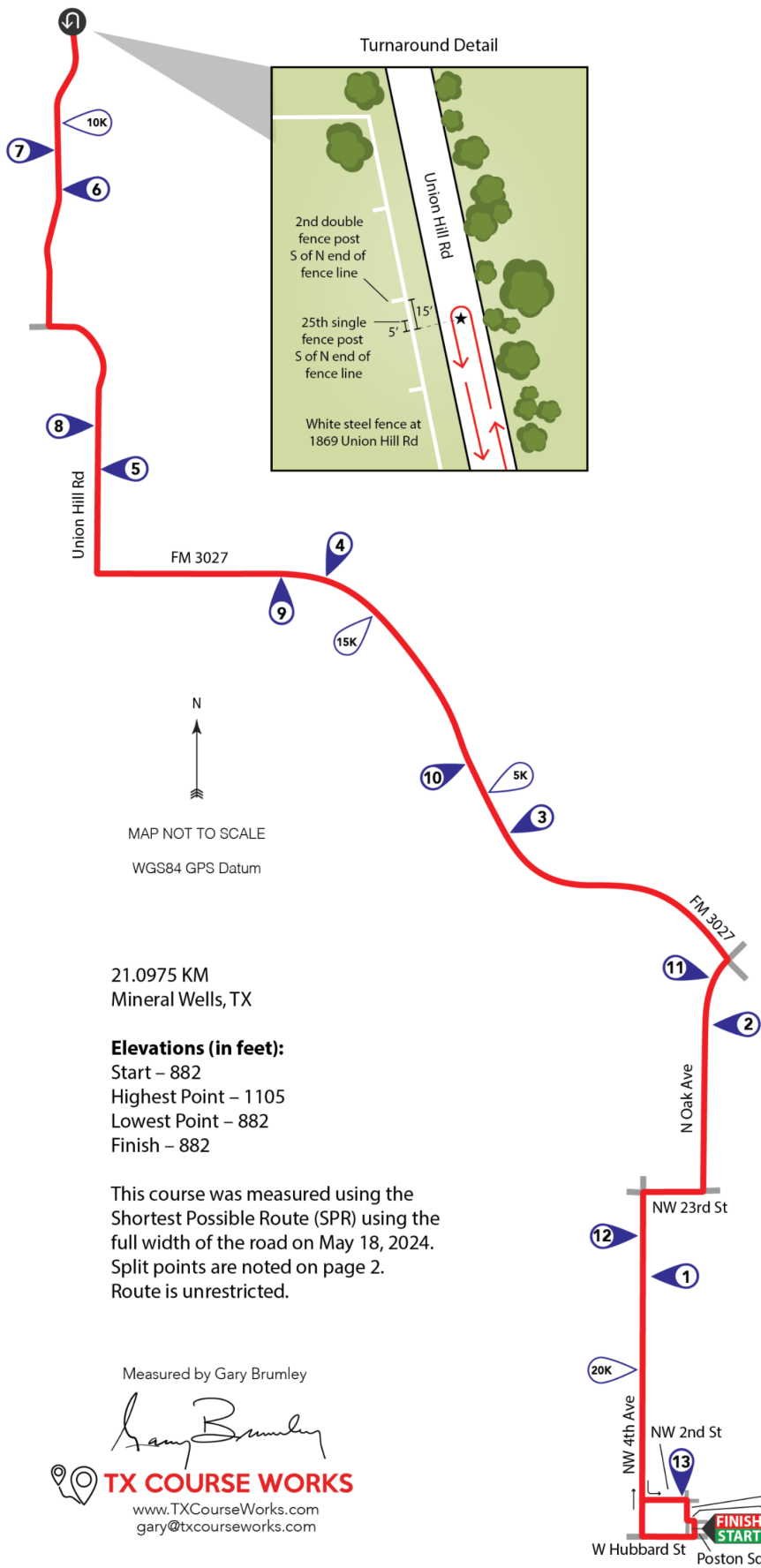
Verification of Course --- In the event a National Open Record is set on the course, or at the discretion of USA Track & Field, a verification measurement may be required to be performed by a member of the Road Running Technical Council. If such a remeasurement shows the course to be short, then all pending records will be rejected and the course certification will be cancelled.

This certification expires on December 31 of the year: **2034**

AS NATIONALLY CERTIFIED BY:

Date: July 6, 2024

Logan Burgess - USATF/RRTC Certifier - 614 Stillmeadow Drive, Richardson TX 75081
(214) 803-7800 - loganaburgess@yahoo.com



Half-Crazy Half Marathon - SPLIT POINTS -

GPS coordinates are provided solely to assist in approximating the described locations and should not be relied upon as a replacement for lost split point markers. Use the provided measurements from landmarks to reestablish split points.

<u>Split</u>	<u>GPS Coordinates</u>	<u>Description</u>
START	32.809454, -98.113631	Poston Square, In-line with center of 1st gravel planter N of S entry on W side of lot, 61' N of "Poston Square" entry sign, and 2' 3" S of the 3rd string light support pole from the SW corner of the lot. Marked with a PK nail and washer by edge of planter.
Mile 1	32.821323, -98.116196	NW 4th Ave, even with mailbox 1708 NW 4th Ave.
Mile 2	32.833550, -98.113107	N Oak Ave, 49' N of mailbox at 3200 N Oak Ave
Mile 3	32.842020, -98.122989	FM3027, 30' S of mailbox at 1165 FM3027
5K	32.843443, -98.123719	FM3027, 534' N of mailbox at 1165 FM3027
Mile 4	32.854044, -98.131824	FM3027, 380' N of mailboxes at NE corner of Intersection of FM3027, Southern Cutoff, and Firewater Ranch
Mile 5	32.859302, -98.143399	Union Hill Rd, 253' N of mailbox at 275 Union Hill Rd
Mile 6	32.872403, -98.145092	Union Hill Rd, 18' S of mailbox at 1339 Union Hill Rd
10K	32.875465, -98.145339	Union Hill Rd, 55' N of the 4th utility pole north of mailbox at 1139 Union Hill Rd
Turnaround	32.880510, -98.144685	Union Hill Rd, 5' S of the 25th fence post S of the N end of steel white fence at 1869 Union Hill Rd, and 15' S of 2nd double fence post S of the N end of same fence. Marked with a PK nail and washer on W edge of Rd.
Mile 7	32.874290, -98.145302	Union Hill Rd, 227' N of 3rd utility pole N of mailbox at 1339 Union Hill Rd
Mile 8	32.861296, -98.143426	Union Hill Rd, 82' S of utility pole 1802 435 4534
Mile 9	32.854406, -98.134127	FM3027, 212' E of mailbox at 2341 FM3027
15K	32.852385, -98.129400	FM3027, 8' S of mailbox at 1980 FM3027
Mile 10	32.843817, -98.123983	FM3027, 154' N of 5K marker on opposite side of rd (688' N of mailbox at 1165 FM3027)
Mile 11	32.835374, -98.112660	N Oak Ave, 48' N of mailbox 3302 N Oak Ave
Mile 12	32.823309, -98.116196	NW 4th Ave, 32' N of mailbox at 2016 NW 4th Ave
20K	32.817100, -98.116214	NW 4th Ave, 43' S of mailbox at 1106 NW 4th Ave
Mile 13	32.810818, -98.114018	NW 2nd St, 60' W of "One Way Do Not Enter" sign at the SW corner of NW 2nd St and NW 1st Ave
FINISH		Same as Start